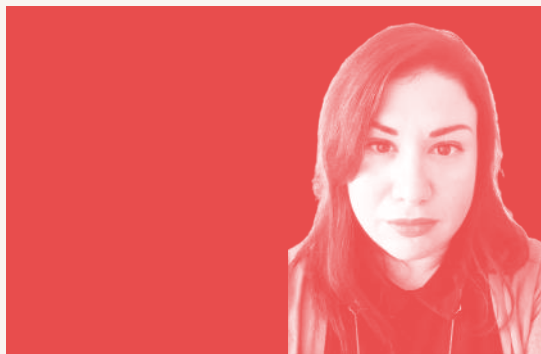


Bags of Words and the Limits of Language

Evelina Leivada

ICREA - Universitat Autònoma de
Barcelona



This talk will discuss the ability of Large Language Models to figure out the limits of language. Building on the metaphor that construes models as bags of words that approximate human linguistic cognition, the results of two experiments that tap into grammatically (im)possible language and lexical decoding respectively will be presented. While the tested models are approximating human baselines, there are qualitative and quantitative differences that distinguish humans from models. A systematic investigation of the alignment of Large Language Models to human performance is likely to provide cross-linguistically robust results that point out to those aspects of human language that are still not within the reach of the current generation of Large Language Models.

**Dijous, 26 de març
de 2026 - 16h**

Aula 2.2

Facultat de Filologia i Comunicació